



# Iowa Health and Human Services System Alignment

**AGING AND DISABILITY  
RESOURCE CENTERS**

**Zachary Rhein, Aging &  
Disability Services Director, Iowa  
HHS**

Summer 2024

# Why System Alignment?



## **In the current system:**

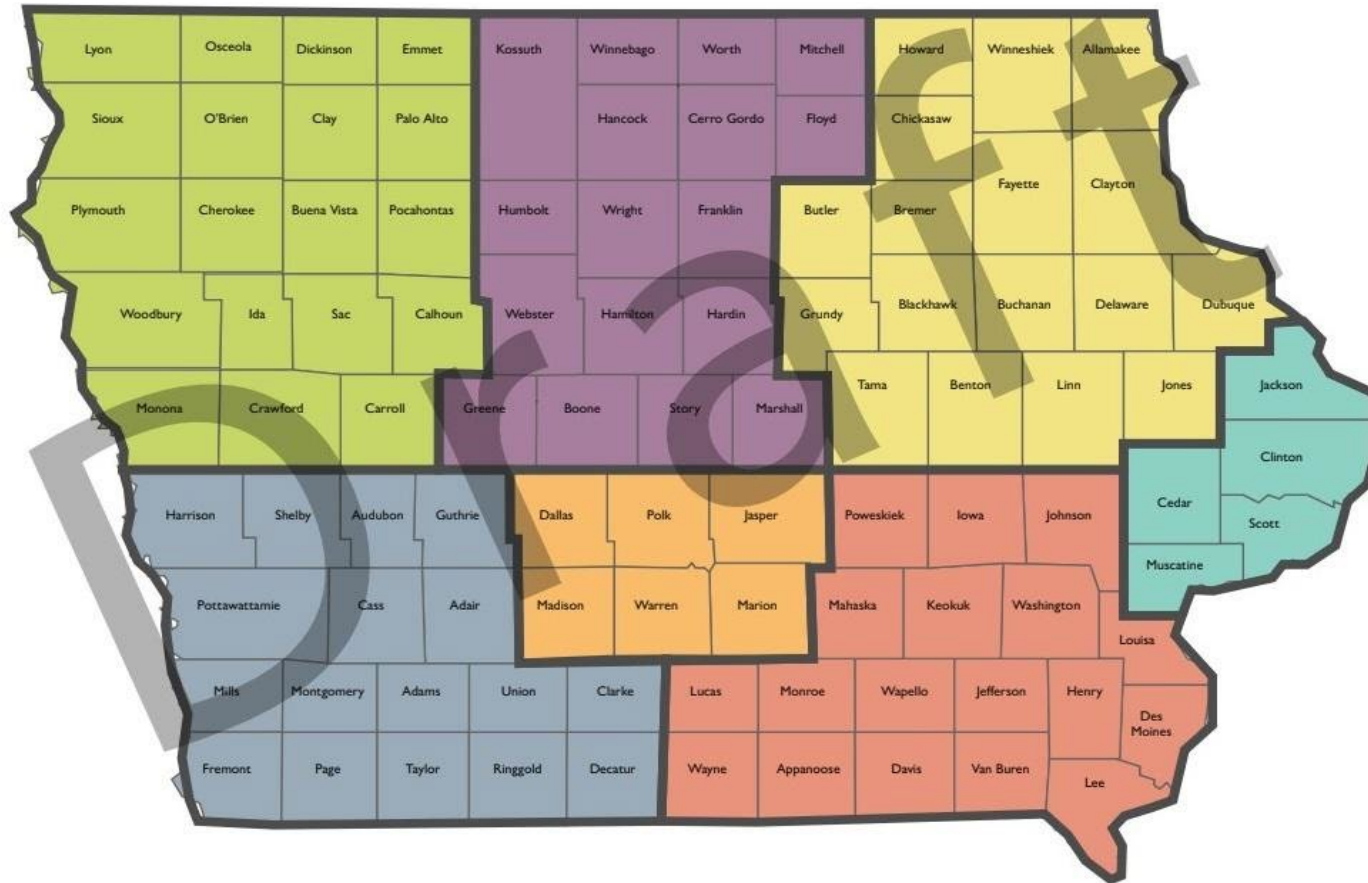
- Navigation is confusing..
- Outcomes are not satisfactory.
- There's a large amount of duplicative administrative red tape.

## **Through alignment Iowa will:**

- Create consistent pathways for accessing services.
- Use existing funding more effectively towards outcomes.
- Streamline administrative work.

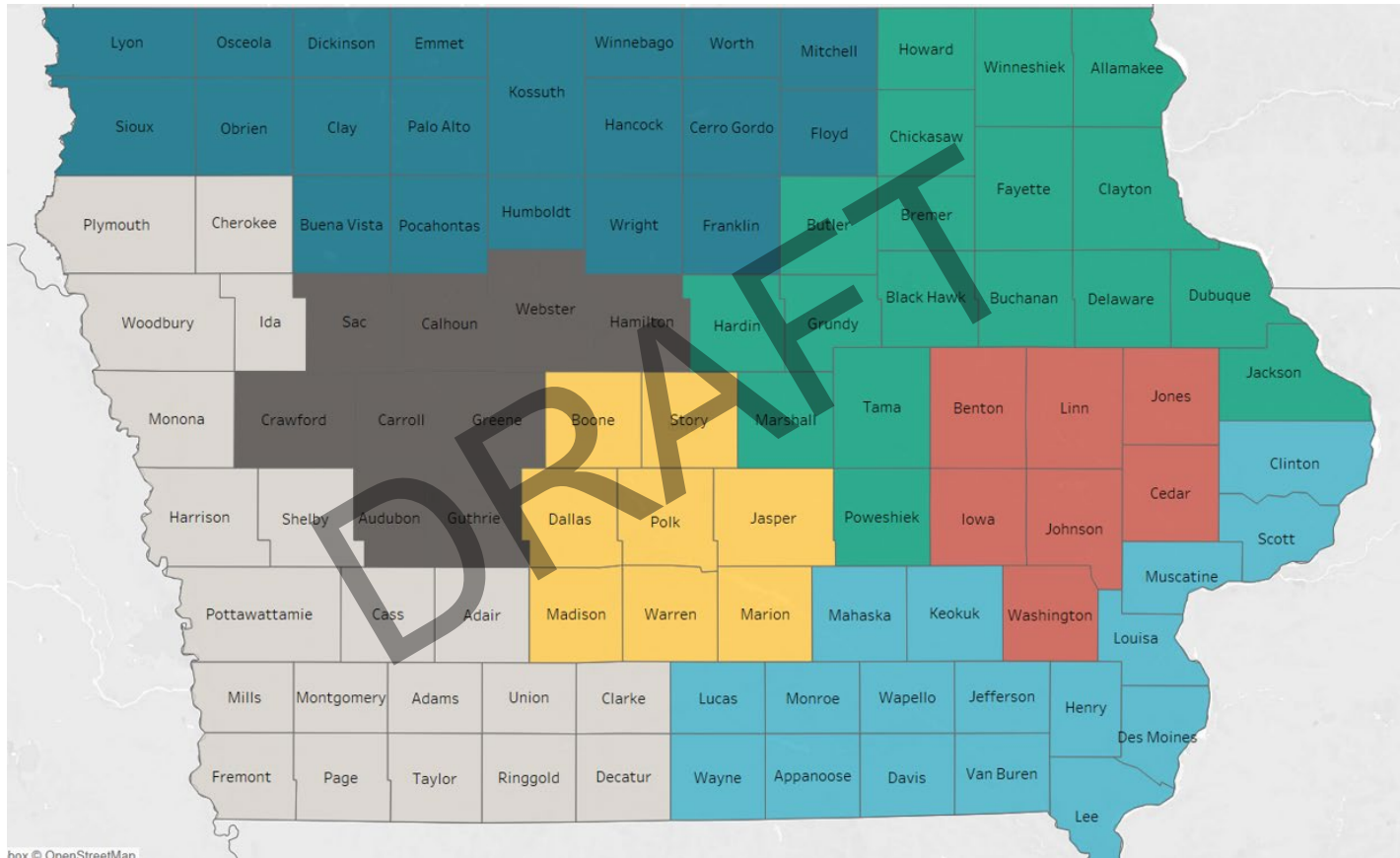


# Behavioral Health District – Option 1



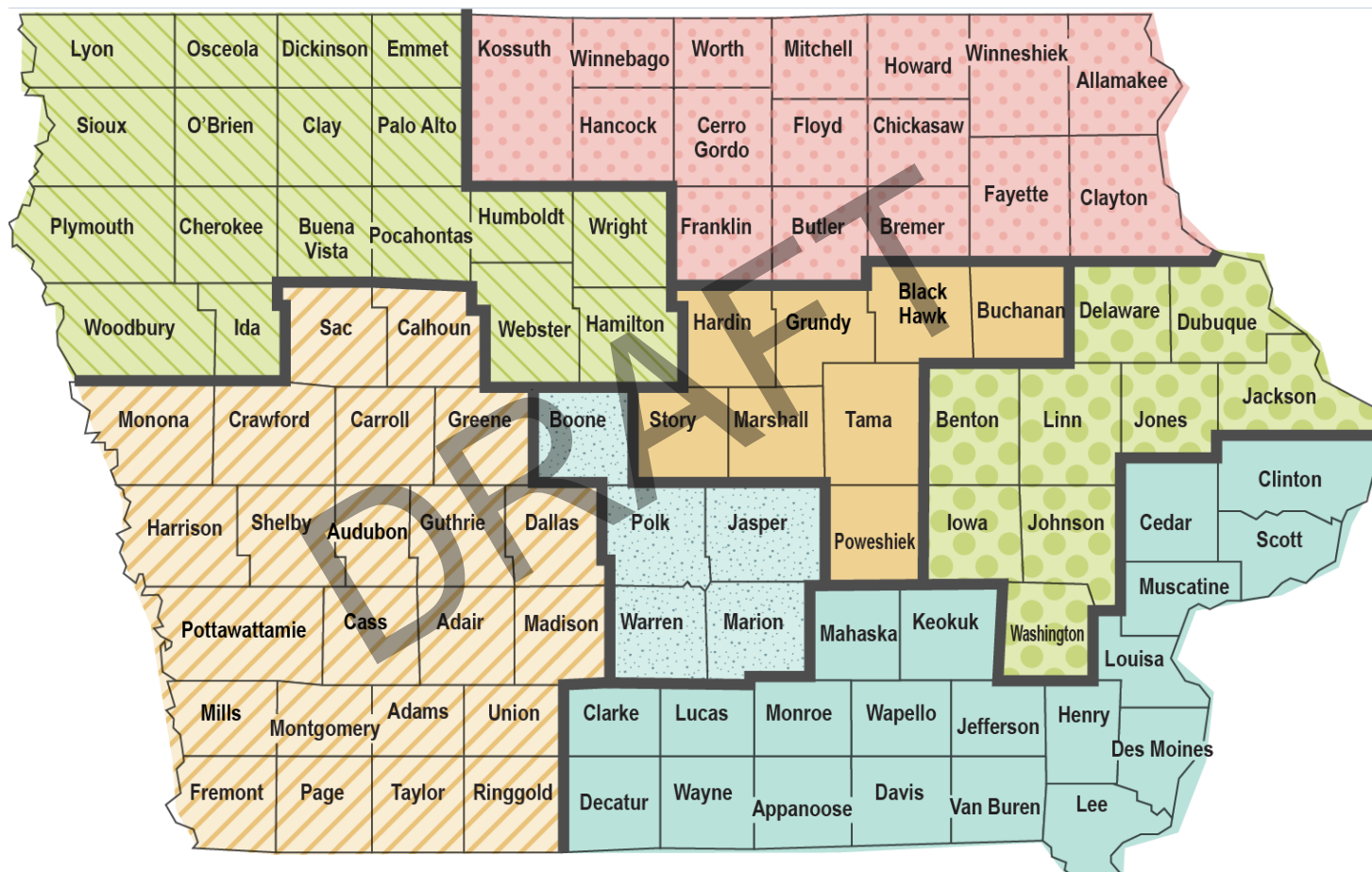
The proposed option 1 map is reflecting patterns of care related specifically to behavioral health.

# Behavioral Health District – Option 2



The proposed option 2 map shows the current regions that the Area Agencies on Aging cover throughout the state.

# Behavioral Health Districts – Option 3



The proposed option 3 map reflects the areas currently covered by community action agencies.



# Aging & Disability Resource Center (ADRC) Expansion

Aging & Disability Services

# What is an Aging and Disability Resource Center (ADRC)?

Hope-centered  
service navigation.

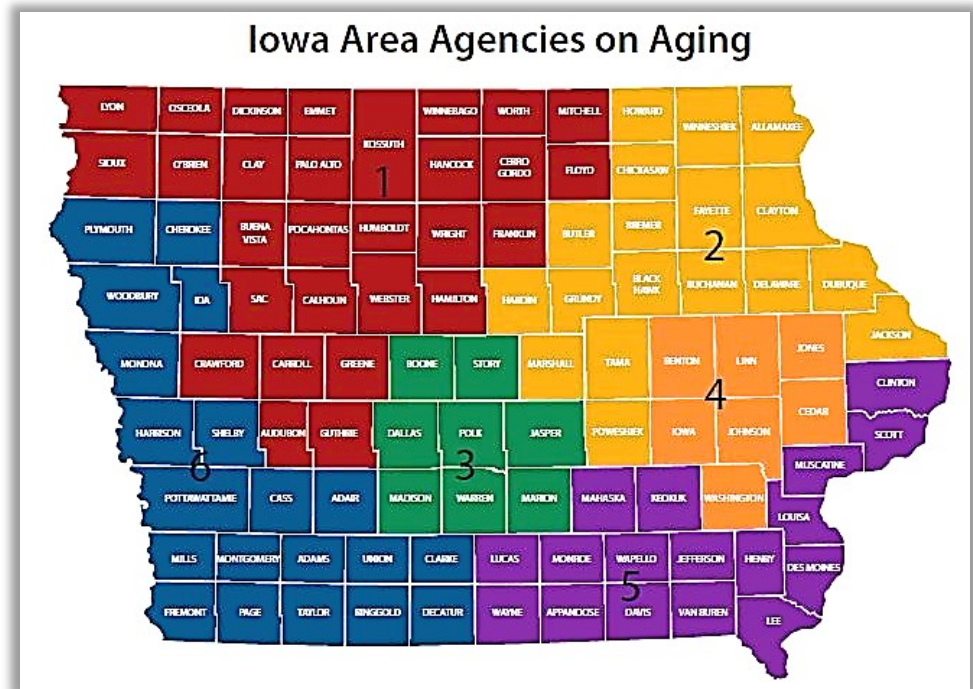
Provides objective  
information, advice,  
and counseling on  
LTSS.

Helps people apply for  
programs and  
benefits.

Empowers people to  
make informed  
decisions about their  
LTSS.

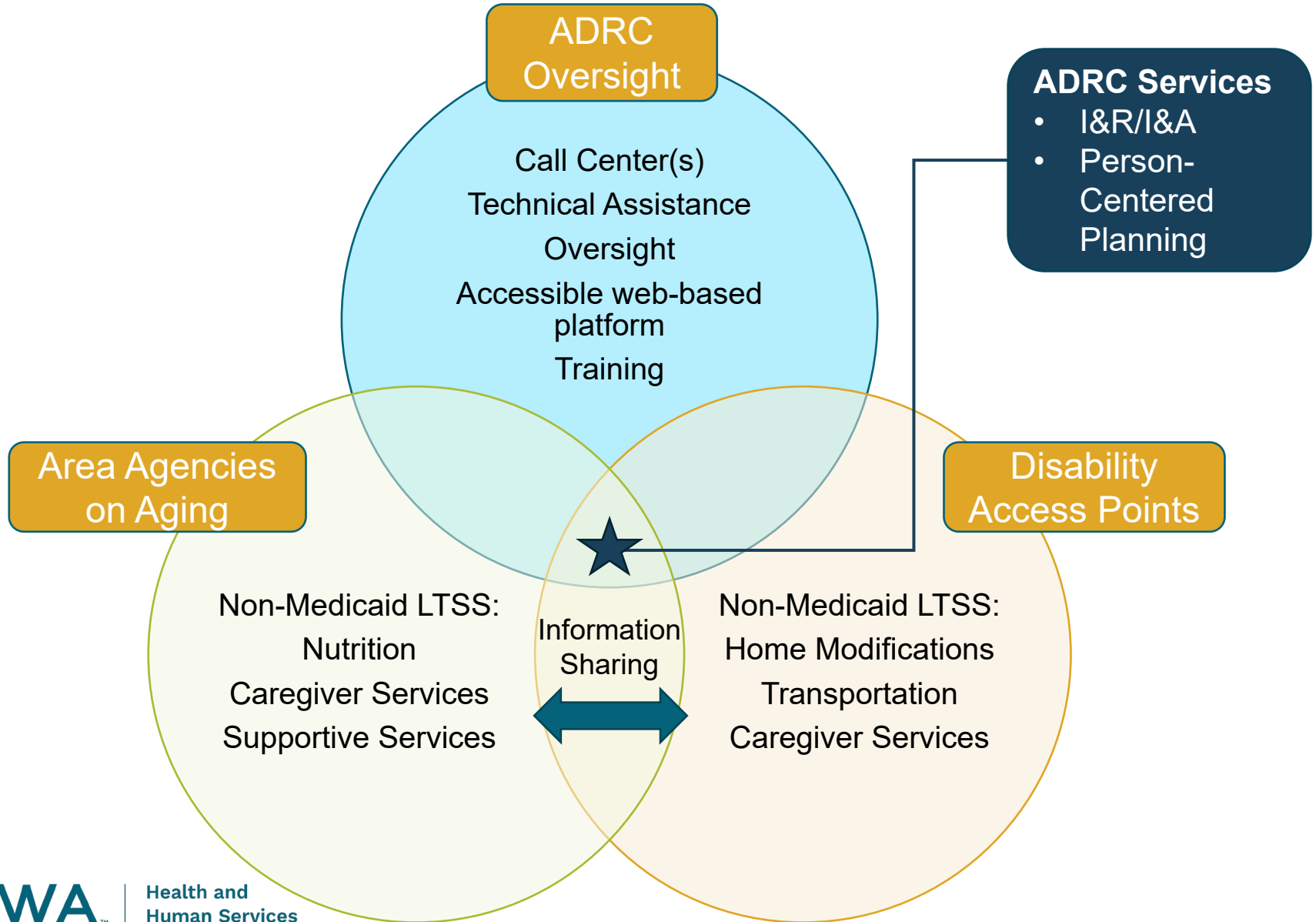
# What is the current state of ADRC in Iowa?

- ▶ Iowa AAAs (six) are designated as the ADRCs.
- ▶ Lack of funding and ability to serve Iowans with disabilities under age 60.
- ▶ Aging focused expertise.

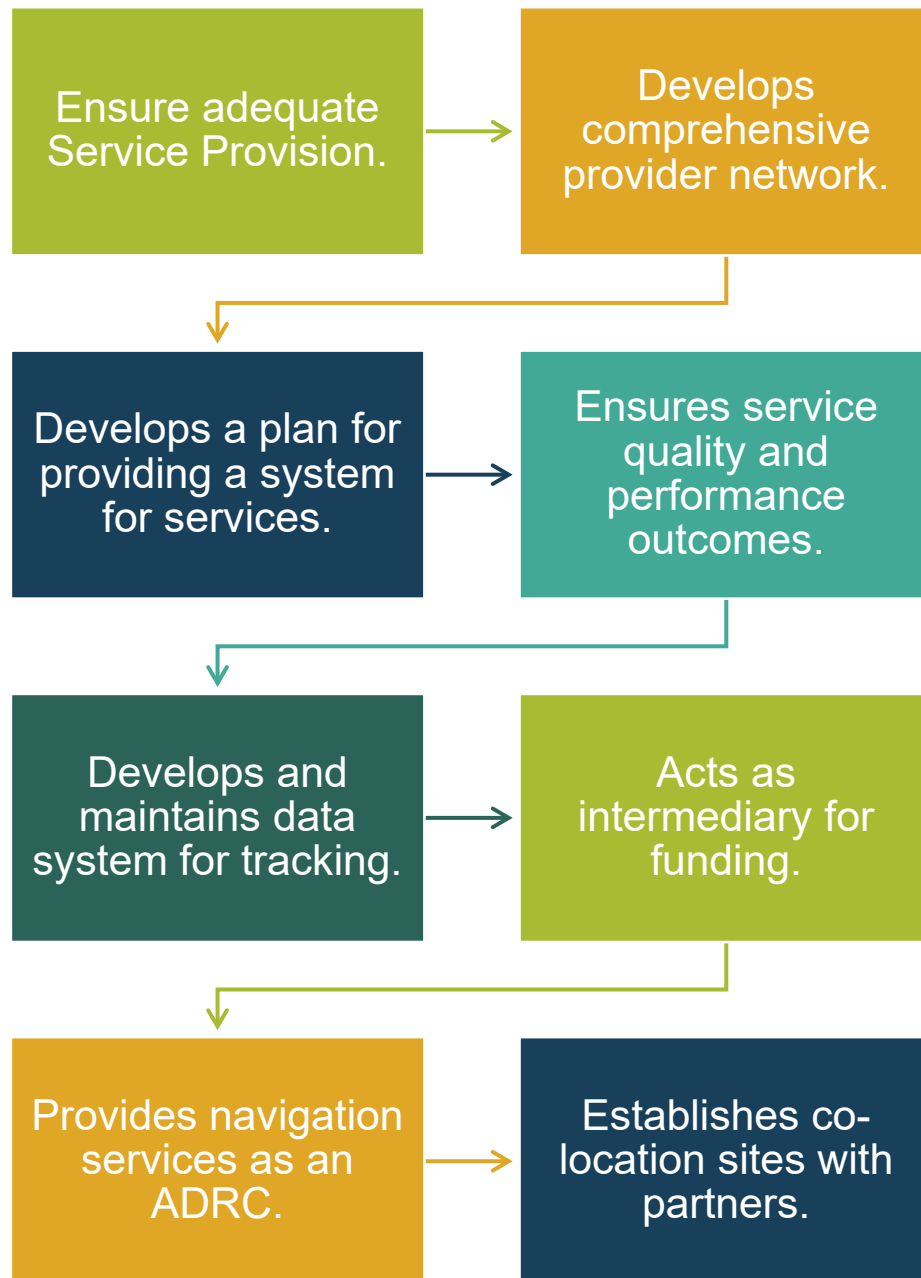




# Coordinated Aging & Disability Network



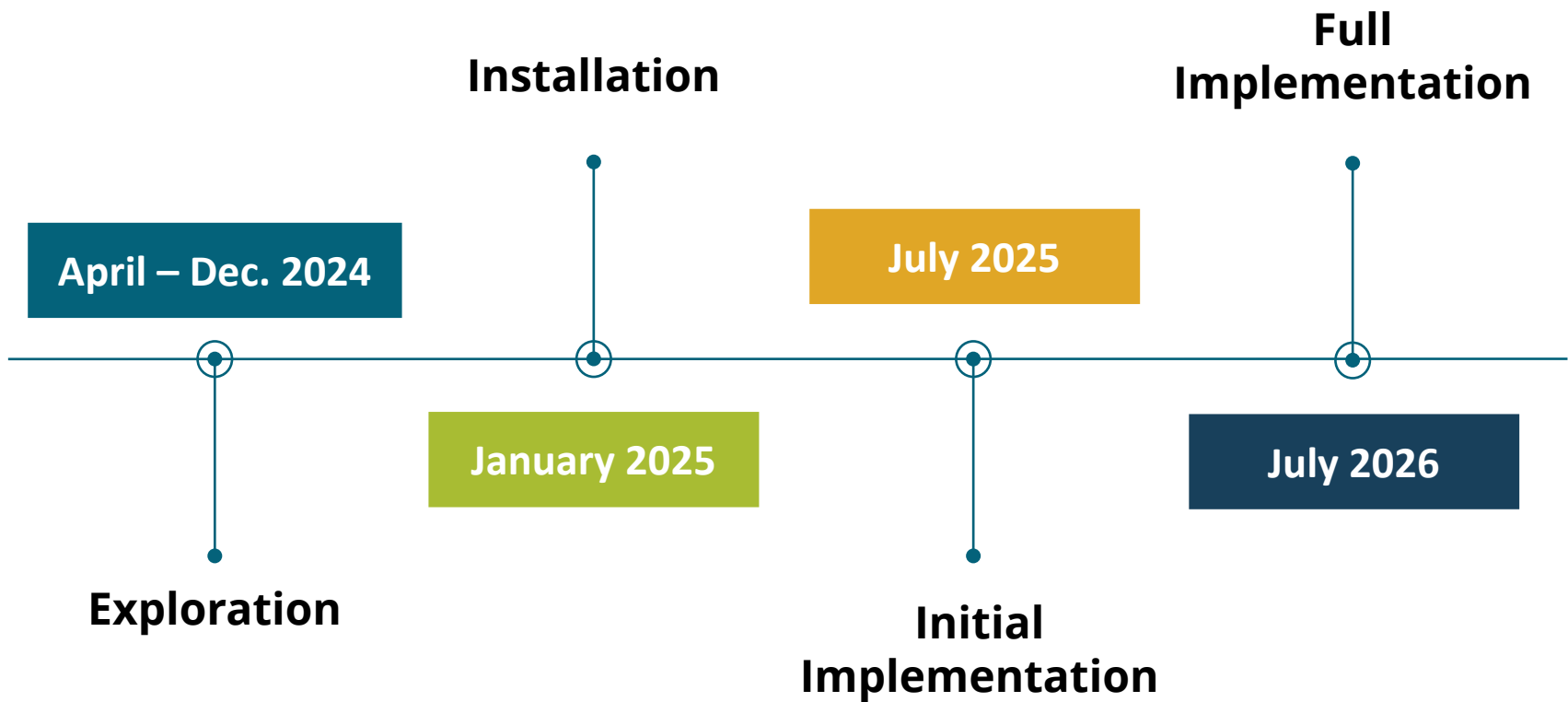
# Area Agency on Aging/Disability Access Point Functions



# ADRC Oversight Functions



# Implementation Timeline





# Feedback

Behavioral Health  
Service System  
Alignment



Thank you!

Learn more about the Behavioral Health Alignment on the HHS website.



Health and  
Human Services



Scan me!

<https://hhs.iowa.gov/initiatives/system-alignment/ibhss>